



FibreTurf

R O O T Z O N E S Y S T E M

Mansfield Sand

FibreTurf

ROOTZONE SYSTEM



FibreTurf is a natural turf growing in a fibre-reinforced rootzone for use in landscape, sports and amenity applications. It offers all the beauty and benefits of natural turf but with added durability and strength. It also offers superior drainage characteristics to conventional soils.

RootZone
Technology

- Natural look and feel
- Hardwearing
- Free-draining
- Low maintenance
- More environmentally friendly/appealing than many hard surfaces eg Tarmacadam.

Where to use Fibreturf

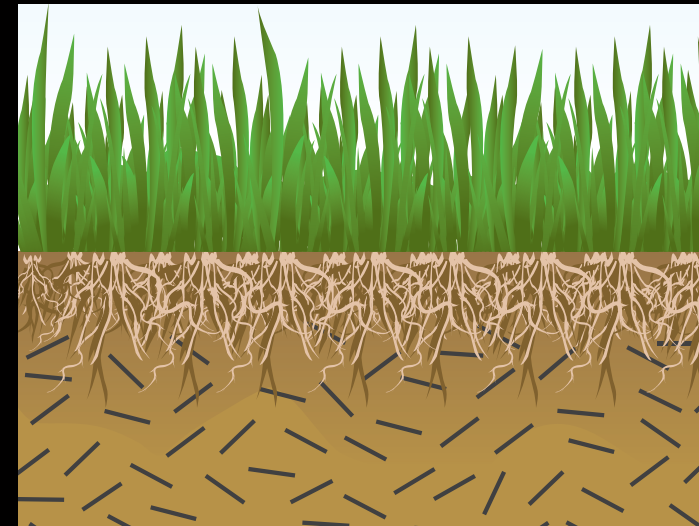
- Emergency vehicle access
- Car parks and overflow parking areas
- Access roads and drives
- Landscaped areas – particularly subject to heavy foot traffic
- Sports surfaces.



FibreTurf

ROOTZONE SYSTEM

The Constituents



Sand - Ensures that water and rainfall is able to drain away to prevent water logging. A variety of silica grades are available to suit a variety of applications.

Organic Matter - Provides the required nutrients for healthy grass growth as well as preserving moisture - essential during dry periods. This is usually derived from an optimum mix of soil and/or peat and 'green waste' compost.

Fibre - Polypropylene fibres provide strength for the grass roots in all directions. Being rot proof, they protect the natural grass roots. They help the surface resist compaction and deformation. This is vital in areas of heavy or demanding foot traffic – such as sports surfaces or where vehicles may have access. Fibreturf also helps maintain optimal growth conditions for the grass and preserves the look of the turf.

How is Fibreturf laid?



Fibreturf is delivered by tipper direct to site.

The exact amount depends on the intended use; a sports turf will require a shallower rootzone than an access route for heavy goods vehicles for example. The latter will also need a permeable base of crushed aggregate and a rootzone with more fibres.



Once the area is prepared, the surface can either be seeded or turf laid.

For technical details and installation instructions, contact us for a FREE guide

01623 622441



The previous natural turf car parks often became wet and muddy during the tournament. The Fibreturf car parks have stood up well to the challenge of up to 500 cars per day, and, despite poor weather conditions, the surface has remained firm and stable.

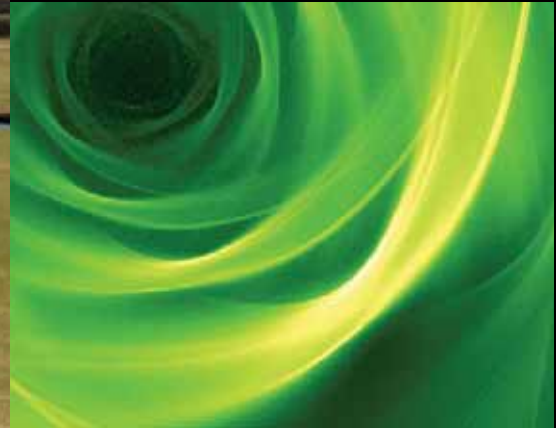
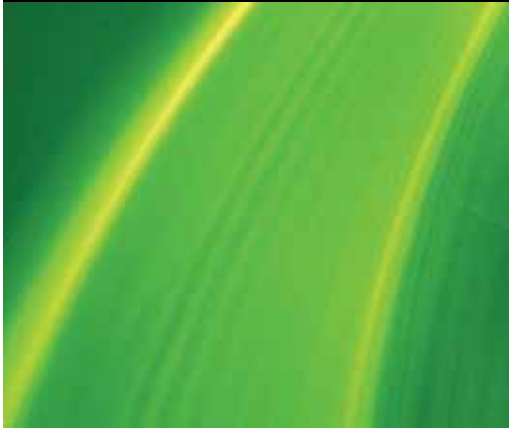
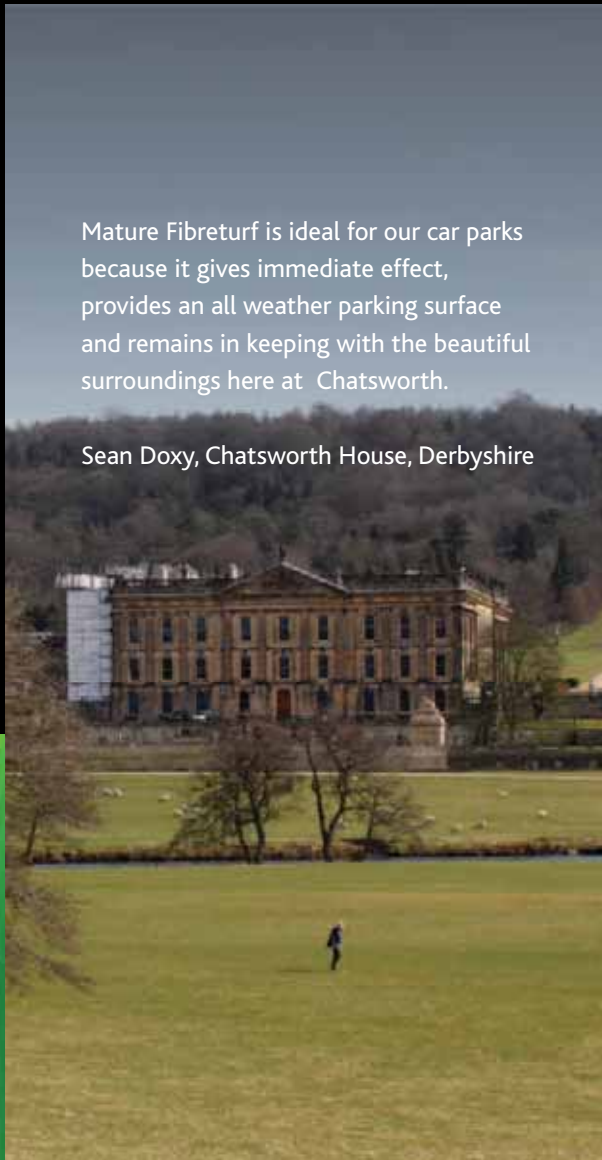
Eddie Seaward, Head Groundsman
Wimbledon

Mature Fibreturf is ideal for our car parks because it gives immediate effect, provides an all weather parking surface and remains in keeping with the beautiful surroundings here at Chatsworth.

Sean Doxy, Chatsworth House, Derbyshire

At Piccadilly Gardens, Manchester, a durable hardwearing surface was needed that could cope with the high volume of pedestrians that pass through the gardens on a daily basis. The existing park area of 4,000 sq.m. was replaced with a fibre reinforced turf system, which is also in keeping with the neatly landscaped appearance of the area.

Alex Edwards, Inturf



INTURF[™]



Mansfield Sand Company Limited
Sandhurst Avenue, Mansfield, Nottinghamshire. NG18 4BE.

Tel: 01623 622441
Fax: 01623 420904
Email: fibresand@aol.com
Website: www.mansfieldsand.co.uk

